



WOODLAWN ROAD, LONDON, SW6
£5,500 per month*

Carter Jonas

WOODLAWN ROAD, LONDON, SW6 6PS

A gorgeous five bedroom family home located in the popular Alphabet Streets of Bishops Park and close to Bishops Park. EPC rating D.

- Five Bedrooms
- Double reception room
- Eat in kitchen
- Three Bathrooms (2 En Suite)
- Walk In Wardrobe
- Garden

LOCATION

Woodlawn Road is situated in the sought after Alphabet streets of the Bishops Park Estate. Running parallel to Fulham Palace Road and the River Thames, it is conveniently located to take advantage of Fulham's recently refurbished, tranquil Bishops Park and the local area's shops, restaurants and sports facilities (tennis courts and gym). Transport links of Hammersmith Broadway (Circle, Hammersmith & City, Piccadilly and District lines) and Putney Bridge (District line) in close proximity.

THE PROPERTY

The property comprises a large and open double reception room, fully fitted kitchen with integrated Neff appliances and doors leading onto a good sized garden which has been partly decked. WC.

The first floor comprises three double bedrooms, one with en suite and walk in wardrobe, a single bedroom/study and guest bathroom suite.

A fifth bedroom is located on the second floor with en suite shower room.

OUTSIDE

Garden



ADDITIONAL INFORMATION

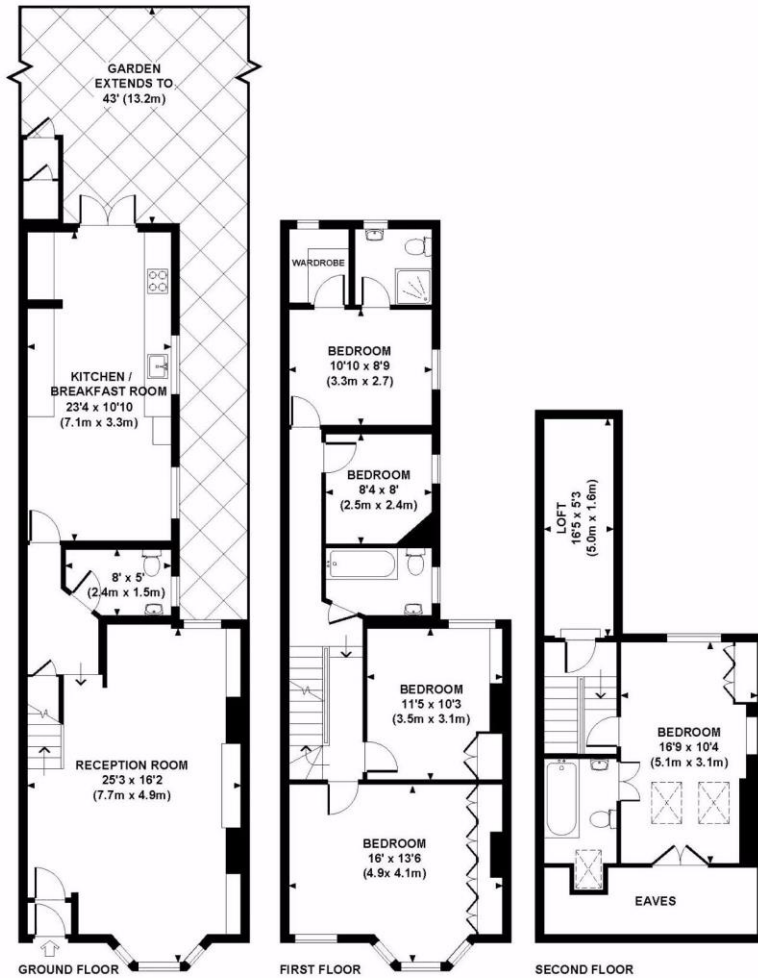
Offers	Available for a minimum term of 12 months longer terms will be considered
Viewing	Strictly by appointment
Local Authority	Hammersmith and Fulham - Council Tax Band
Directions	Woodlawn Road runs parallel with Fulham Palace Road and Stevenage Road and is located within the Alphabet Streets of Bishops Park



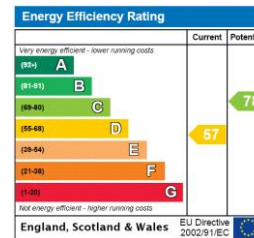
WOODLAWN ROAD, SW6

Approx. gross internal area 1699 Sq Ft. / 158 Sq M.

Approx. gross internal area 1870 Sq Ft. / 174 Sq M. Inc. Loft and Eaves Storage



All measurements are approximate and for illustration purposes only as defined by the NICS Code of Measuring Practice © 2012. Drawing: Jones Design www.jonesdesign.co.uk (020 7610 5993)



T: 020 7751 8898

361 Fulham Palace Road, London, SW6 6TA

E: parsonsgreen.residential.lettings@carterjonas.co.uk

carterjonas.co.uk
Offices throughout the UK

A member of
onTheMarket.com
Classification L2 - Business Data

IMPORTANT INFORMATION

Our property particulars do not represent an offer or contract, or part of one. The information given is without responsibility on the part of the agents, seller(s) or lessor(s) and you should not rely on the information as being factually accurate about the property, its condition or its value. Neither Carter Jonas LLP nor anyone in its employment or acting on its behalf has authority to make any representation or warranty in relation to this property. We have not carried out a detailed survey, nor tested the services, appliances or fittings at the property. The images shown may only represent part of the property and are as they appeared at the time of being photographed. The areas, measurements and distances are approximate only. Any reference to alterations or use does not mean that any necessary planning permission, building regulation or other consent has been obtained. The VAT position relating to the property may change without notice. Administration fees may apply depending on tenancy type. Please contact your local branch for this information.